

WX 14 1×230 V

Installation length	150 mm
Permissible operating pressure	10 bar
Permissible operating temp.	65°C (max. 22°FH = 12°dH) 95°C (max. 14°FH = 8°dH)
Required operating pressure at at 65°C water temperature	500 m a.s.l. 0.4 bar
at 95°C water temperature	+0.6 bar
Weight	2.6 kg

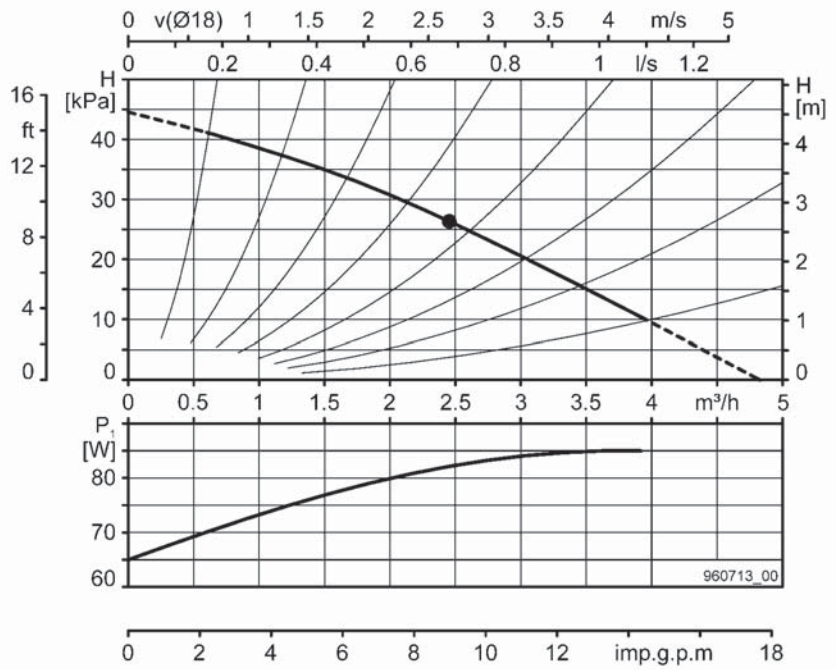
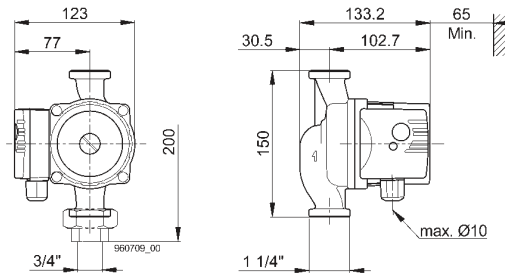
Voltage	1×230 V, 50 Hz
Speed	2400 rpm
Current	0.42 A
Power	65...85 W
Capacitor built in	2 µF, 400 V

The motor is short-circuit proof and requires no overload protection.

Pump housing: bronze

Control devices

For further information see page 69



W 314 3×400 V

Installation length	150 mm
Permissible operating pressure	10 bar
Permissible operating temp.	65°C (max. 22°FH = 12°dH) 95°C (max. 14°FH = 8°dH)
Required operating pressure at at 65°C water temperature	500 m a.s.l. 0.4 bar
at 95°C water temperature	+0.6 bar
Weight	4 kg

Voltage	3×400 V, 50 Hz
Speed	2450 rpm
Current	0.19 A
Power	60...110 W

The motor is short-circuit proof and requires no overload protection.

Pump housing: bronze

Control devices

For further information see page 69

